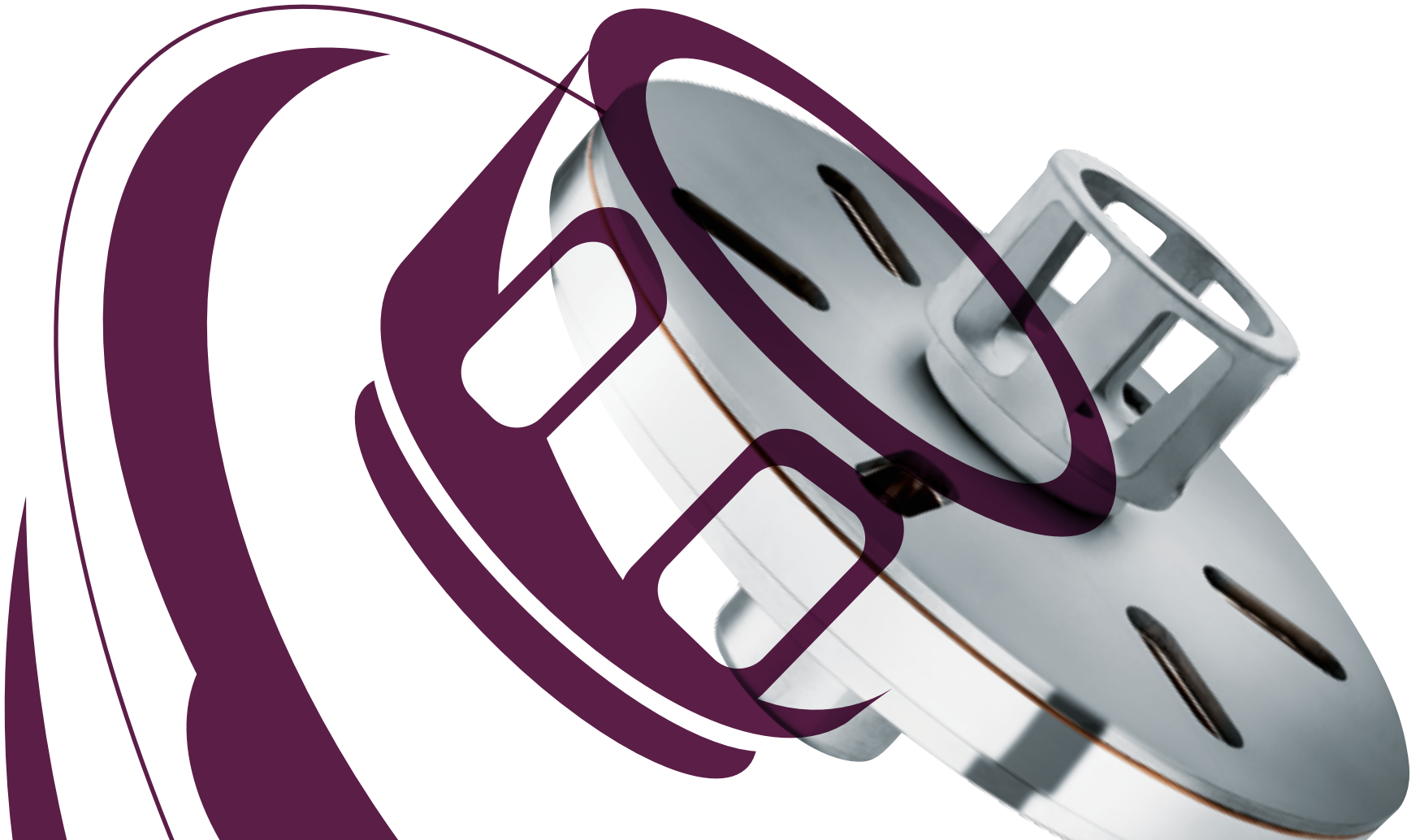


» CARBIDE AND COATINGS

# **BLASTING AND SURFACE TECHNOLOGY**

**Wear-resistant. Permanently strong.**

**DURIT**



# » WEAR PROTECTION FOR BLASTING AND SURFACE TECHNOLOGY

Surface finishing, surface cleaning and more: Abrasive media place very special demands on the properties of tools and components—cemented carbide can withstand. DURIT offers **individualized solutions** creating noticeable added value.

## » WE SOLVE WEAR PROBLEMS

Distributors, blades, accelerators: DURIT products represent **maximum quality** and provide decisive **competitive advantages**. Our customers tell us their requirements for their components or tools—our experts find the appropriate solution.

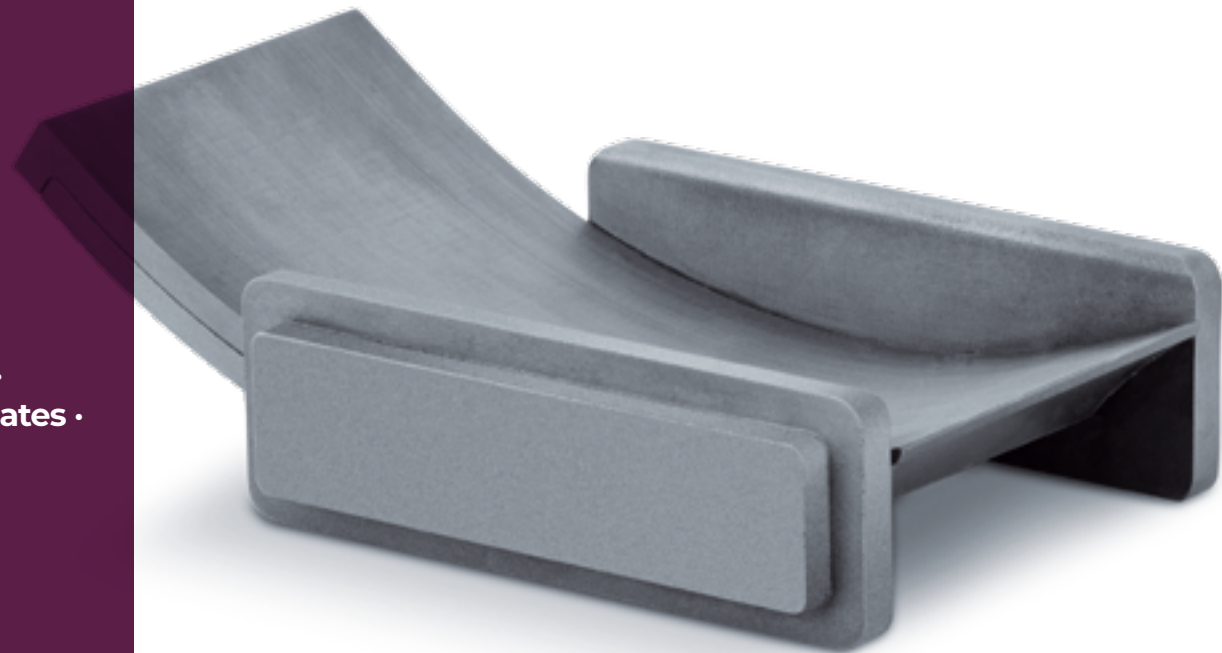
## » WITHSTANDS MOST EXTREME DEMANDS

### Products ::

nozzles · throw blades · accelerators ·  
separators · impact protection · wear plates ·  
lining · supplying parts

### Typical applications ::

surface finishing and cleaning





## » CARBIDE TECHNOLOGY

Parts, tools and components made of cemented carbide are **the ultimate in wear resistance and longevity** and **ensure utmost versatility**. DURIT carbide solutions stand up to the toughest demands.

### » DEDICATED TO CARBIDE

**Carbide from a single source**—from blanks to high-precision final products. DURIT produces **customized parts** and realizes **individual shapes** as well as **complex geometries**.

### » WE OFFER FULL-SERVICE CARBIDE

## HARDFACTS

### » DURIT HARTMETALL

#### » SINCE 1982

Successful and solution-oriented

#### » OVER 500 EMPLOYEES

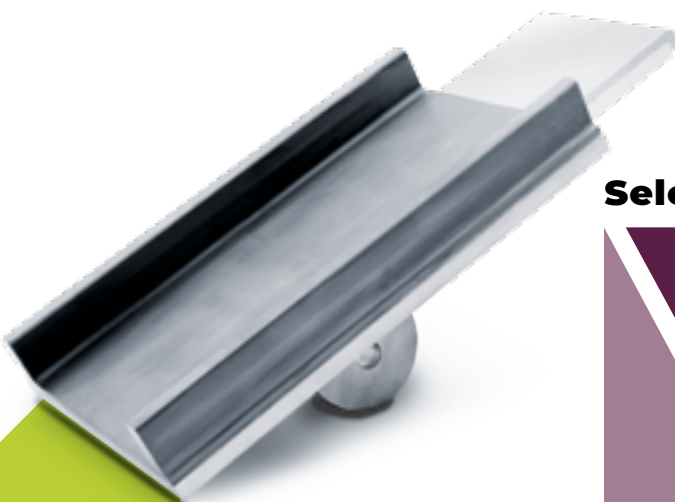
Worldwide

#### » MORE THAN 60 CARBIDE GRADES

For wear protection and metal forming

#### » 100 % COATING EXPERTISE

HVOF, APS, EAWS, Laser Cladding, PVD and CVD



**Selection of application-specific carbide grades ::**

<b>GRADE</b>	<b>Composition</b>	<b>Binder (%)</b>	<b>Grain size</b>	<b>Hardness (HV30)</b>	<b>Fracture toughness (MPa·m<sup>1/2</sup>)</b>
GD03F	WC-Co	5,75	submicron	1850	9
GD08F	WC-Co	8,00	submicron	1625	10
GD13F	WC-Co	10,00	submicron	1540	12
GD05	WC-Co	5,50	fine	1700	10
GD10	WC-Co	6,00	medium	1600	10
GD15	WC-Co	8,00	medium	1460	12
GD20	WC-Co	10,00	medium	1350	15



# » DURIT QUALITY REPRESENTS BEST RESULTS

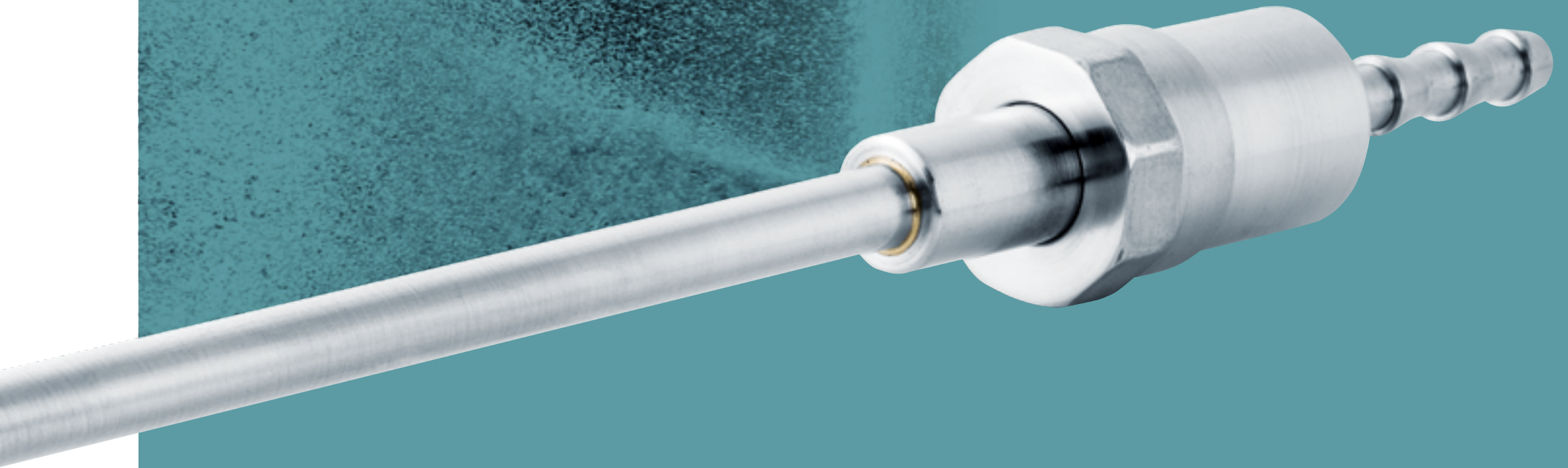
As one of few **complete suppliers in the market**, DURIT offers an all-encompassing concept from consultation, development and design, all the way to production of highly accurate components.

## » CARBIDE FROM A SINGLE SOURCE

Our products are designed with a focus on **dimensional accuracy, continuity** and **value enhancement**. Therefore, all our production sites are equipped with state-of-the-art technology. In particular, we attach great importance to our **process-oriented quality management**.

## » QUALITY AND ADDED VALUE THROUGH CERTIFIED PROCESSES





» **DURIT HARTMETALL GMBH**

Linderhauser Straße 139  
D-42279 Wuppertal  
Germany  
T +49 202 55 109 0  
F +49 202 55 109 25  
info@durit.de

[durit.com](http://durit.com)

**takes you to EXTREMES**

