

» CARBIDE AND COATINGS

**CRUSHING
MILLING
PELLETIZING
RECYCLING**

Hard and strong performance.

DURIT



» CARBIDE TECHNOLOGY

Parts, tools and components made of cemented carbide are **the ultimate in wear resistance and longevity** and **ensure utmost versatility**. DURIT carbide solutions stand up to the toughest demands.

» DEDICATED TO CARBIDE

Carbide from a single source—from blanks to high-precision final products. DURIT produces **customized parts** and realizes **individual shapes** as well as **complex geometries**.

» WE OFFER FULL-SERVICE CARBIDE

HARDFACTS

» DURIT HARTMETALL

» SINCE 1982

Successful and solution-oriented

» OVER 500 EMPLOYEES

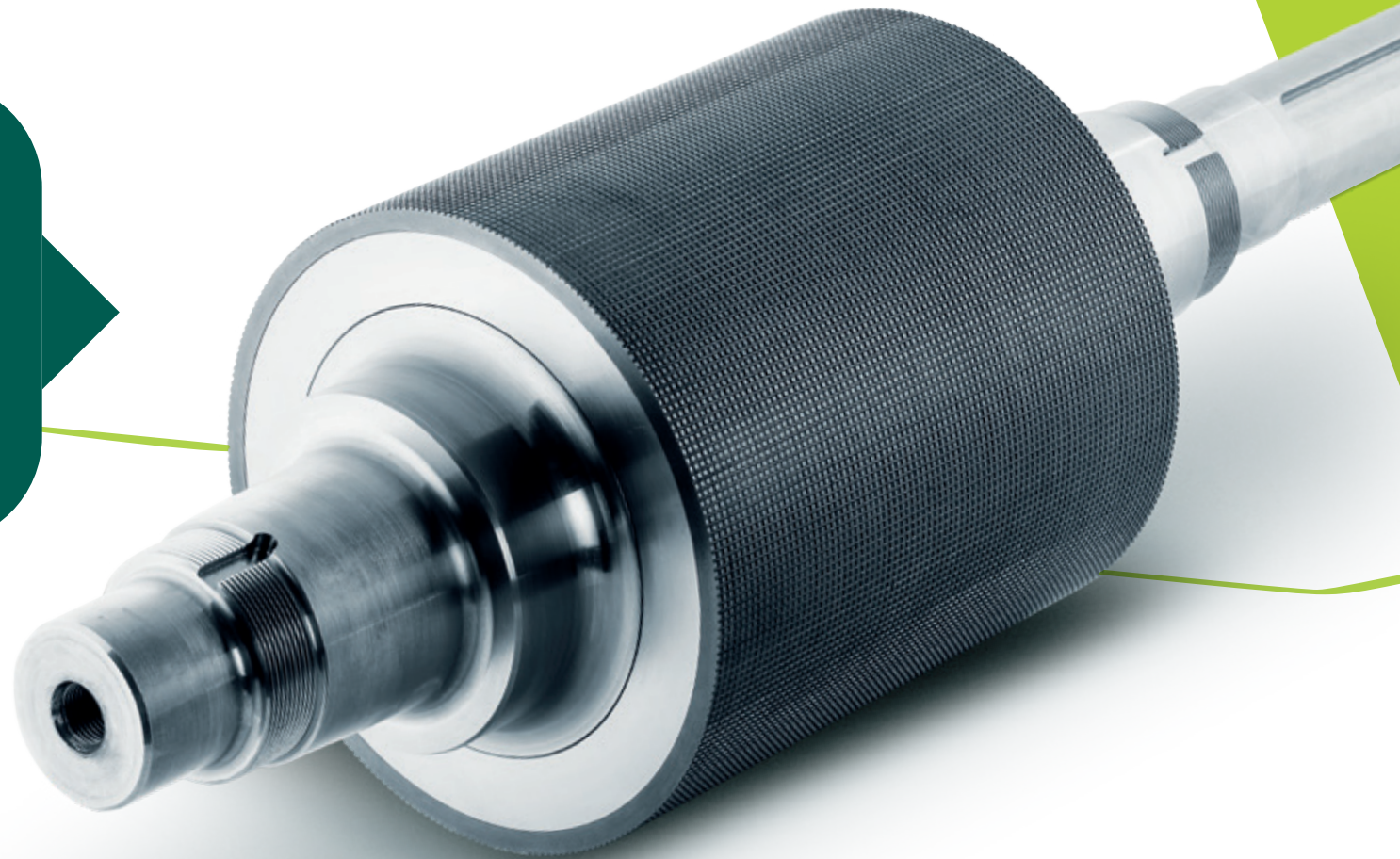
Worldwide

» MORE THAN 60 CARBIDE GRADES

For wear protection and metal forming

» 100% COATING EXPERTISE

HVOF, APS, EAWS,
Laser Cladding, PVD and CVD



» WEAR PROTECTION FOR CRUSHING, MILLING, PELLETIZING, RECYCLING

Crushing and milling hard recyclable materials puts extreme demands on tools, parts and components. In these applications, cemented carbide features a much higher break resistance than ceramics and **a much higher wear and pressure resistance than other materials**. DURIT creates first-class solutions for all requested applications.

» WE SOLVE WEAR PROBLEMS

DURIT HARTMETALL has offered convincing solutions in the field of powder processing, pelletizing and recycling for years. The **durability of DURIT components** is also appreciated in industries that process secondary or natural materials.

» WITHSTANDS MOST EXTREME DEMANDS



Products ::

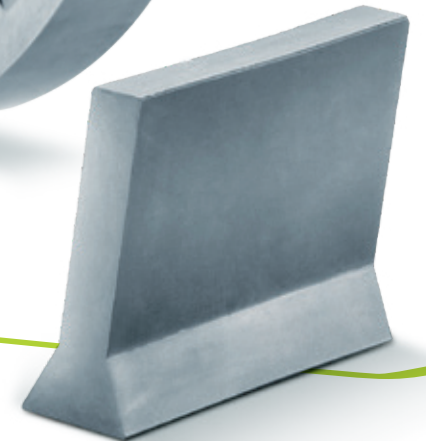
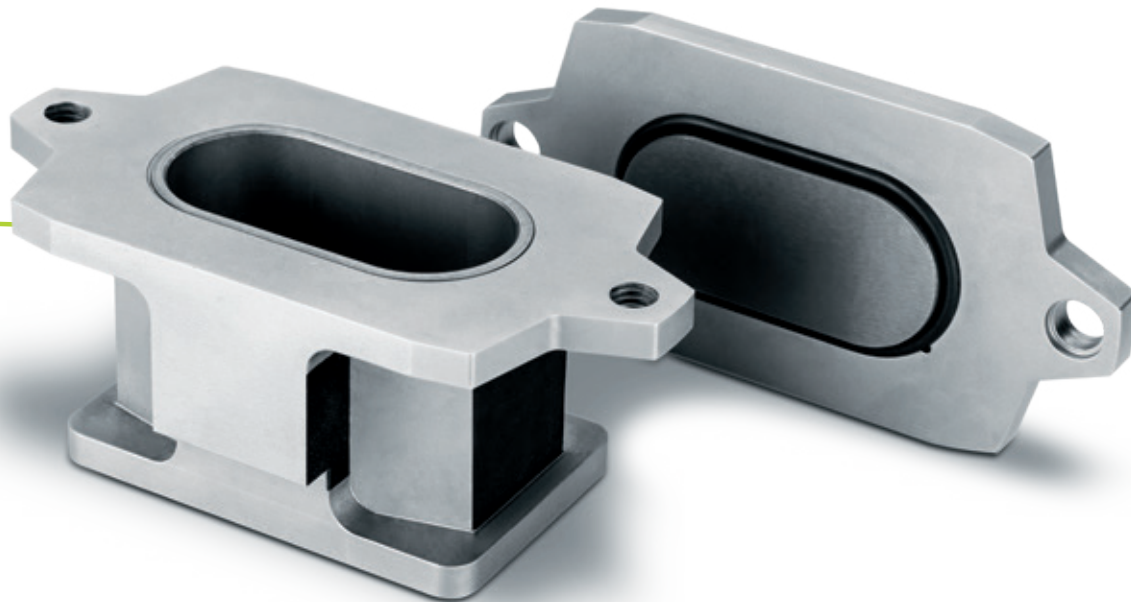
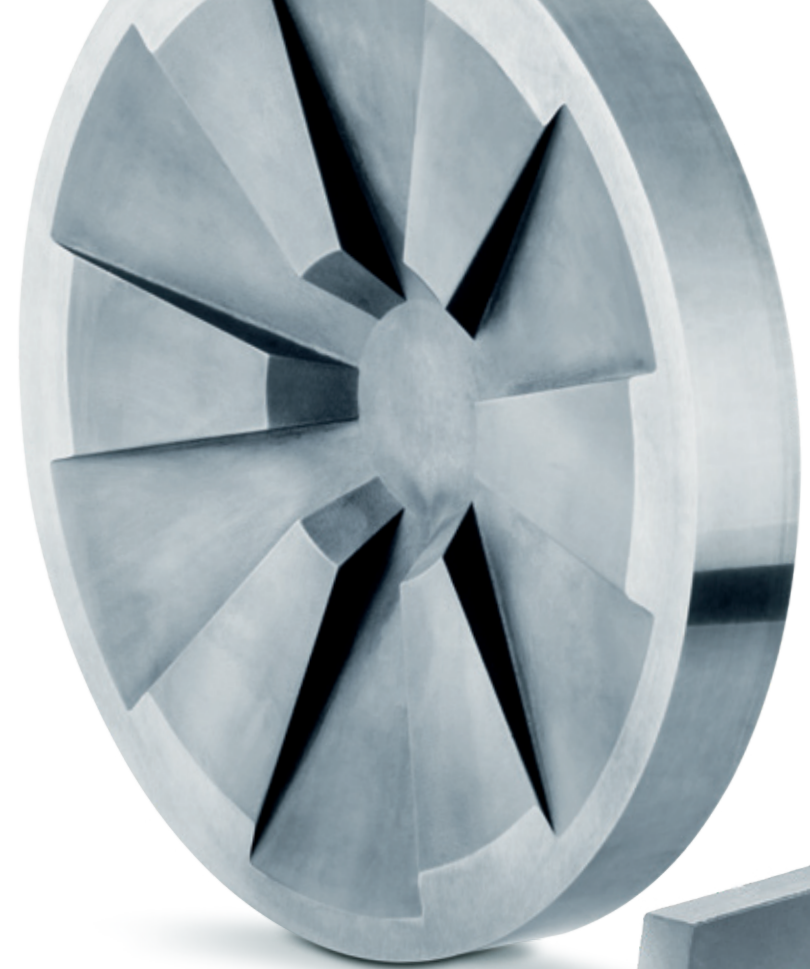
grinding bowls · mill rings · millstones ·
milling pins · milling discs · milling cones ·
impact strips · impact feed · pestles ·
blade strips · crusher rollers · crusher jaws
and plates · sieve rings · linings · pins ·
strippers · perforated plates

Typical applications ::

pin mills · laboratory mills · cone mills ·
impact mills · hammer mills · shredders ·
pelletizers · jaw crushers · roller crushers

Selection of application-specific carbide grades ::

GRADE	Composition	Binder (%)	Grain size	Hardness (HV30)	Fracture toughness (MPa * m ^{1/2})
GD08F	WC-Co	8,00	submicron	1625	10
GD13F	WC-Co	10,00	submicron	1540	12
GD10	WC-Co	6,00	medium	1600	10
GD20	WC-Co	10,00	medium	1350	15
GD30	WC-Co	15,00	medium	1150	15,5
BD05	WC-Co	6,00	coarse	1450	15
BD10	WC-Co	9,00	coarse	1250	16
BD20	WC-Co	10,00	coarse	1215	19



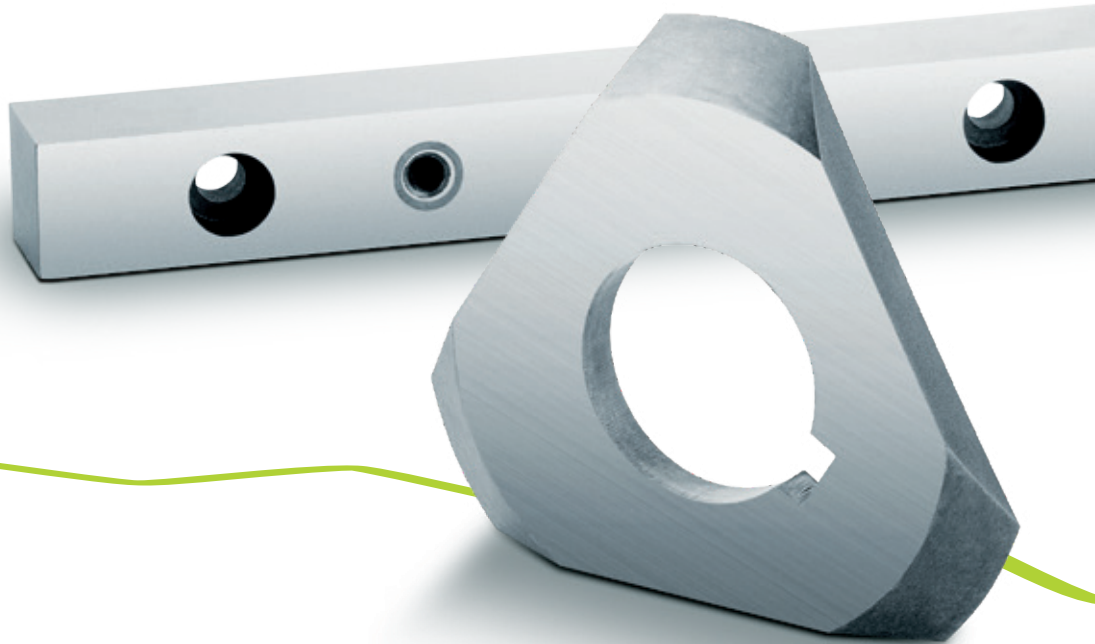
» DURIT QUALITY REPRESENTS BEST RESULTS

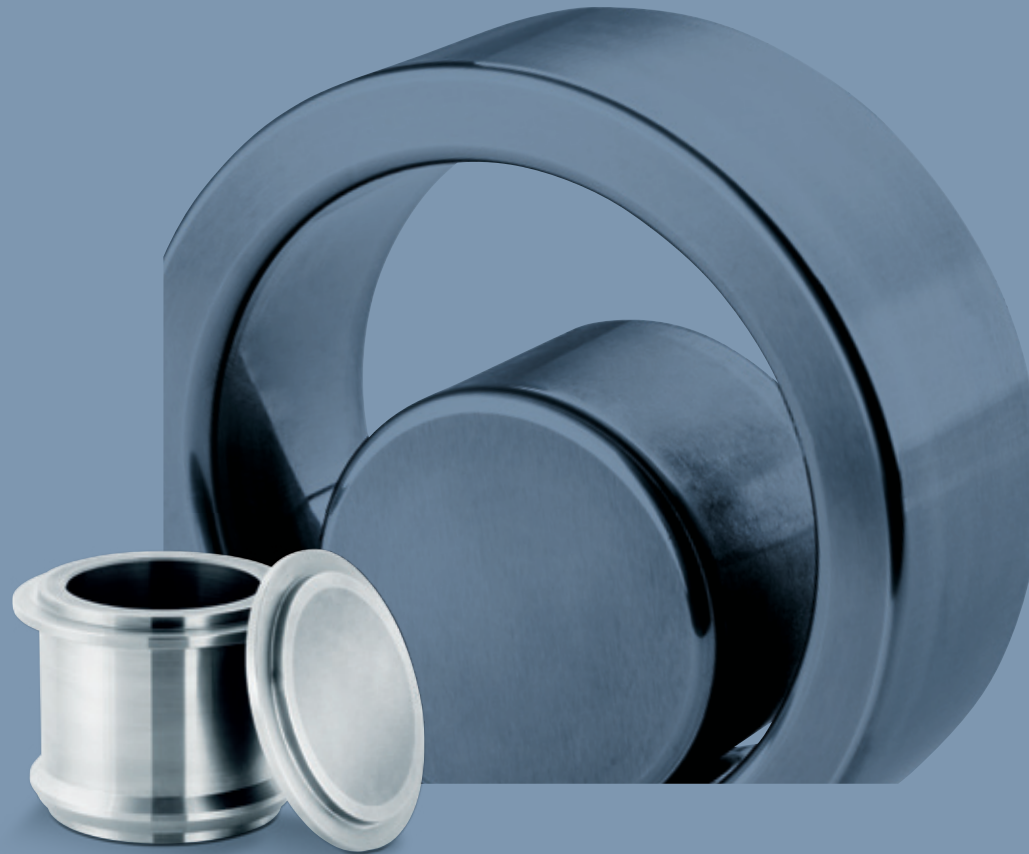
As one of few **complete suppliers in the market**, DURIT offers an all-encompassing concept from consultation, development and design, all the way to production of highly accurate components.

» CARBIDE FROM A SINGLE SOURCE

Our products are designed with a focus on **dimensional accuracy, continuity** and **value enhancement**. Therefore, all our production sites are equipped with state-of-the-art technology. In particular, we attach great importance to our **process-oriented quality management**.

» QUALITY AND ADDED VALUE THROUGH CERTIFIED PROCESSES





» **DURIT HARTMETALL GMBH**

Linderhauser Straße 139
D-42279 Wuppertal
Germany
T +49 202 55 109 0
F +49 202 55 109 25
info@durit.de

durit.com

» **DURIT METALURGIA PORTUGUESA
DO TUNGSTÊNIO, LDA.**

Zona Industrial – Arruamento C
3854-184 Albergaria-a-Velha
Portugal
T +351 234 529 810
comercial@durit.pt

durit.com/pt

takes you to EXTREMES    